



# eltic-Plus<sup>+</sup>

Smart Connected World

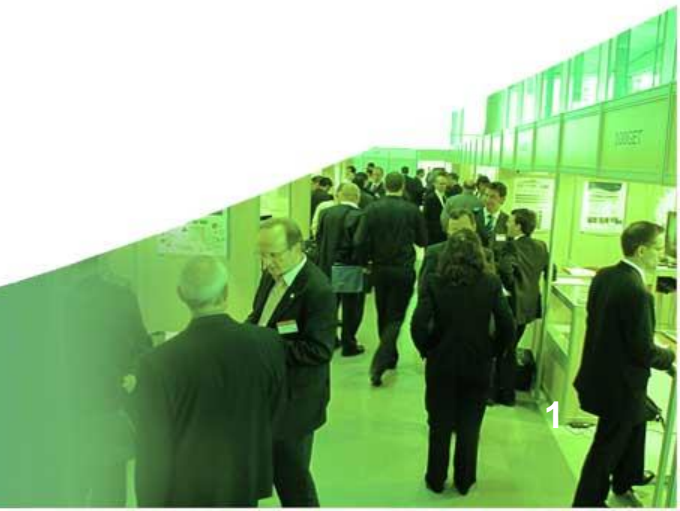


Celtic-Plus Proposers Day  
29 June 2015, Orange, Issy les Moulineaux

**Indoor geolocation application on  
smartphone / tablet**

## Loc[k]os

*David HERVE – R&D Director – IT Link*  
[dherve@itlink.fr](mailto:dherve@itlink.fr)



- **IT Link Group** is a Digital Services Company specialized in Embedded Systems and IT
- **Unique experience** in the design of embedded systems for the Automotive industry and of critical systems for the Defense sector

31,11M€ 2014 turnover  
441 employees  
8 locations in France  
2 locations worldwide  
29 years of existence  
31 y.o. average age

93% engineers  
12 mastered languages  
54 represented schools  
96 current customers  
296 ongoing projects  
7 accreditations

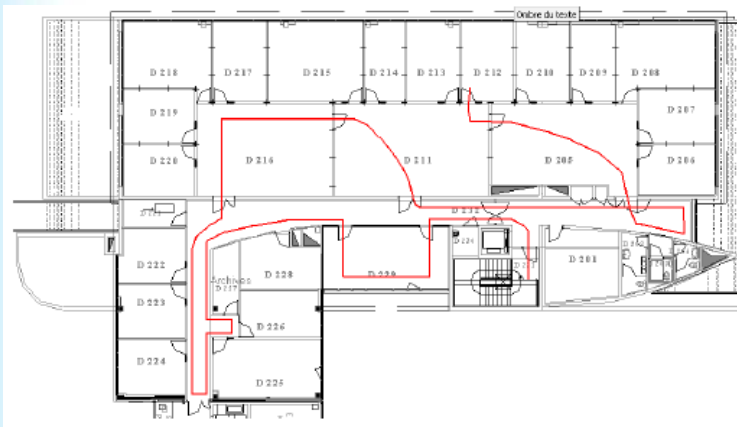
# Project objectives

## Booming markets:

- Indoor geolocation market = 4.4 \$B in 2019 (CAGR<sub>2014-2019</sub> : +36.5%)  
(<http://www.marketsandmarkets.com>, November 2014)
- MEMS motion sensors market = 5.2 \$B in 2019 (CAGR MEMS<sub>2012-2019</sub> : +13%)  
(<http://www.semi.org/eu/sites/semi.org>, October 2014)

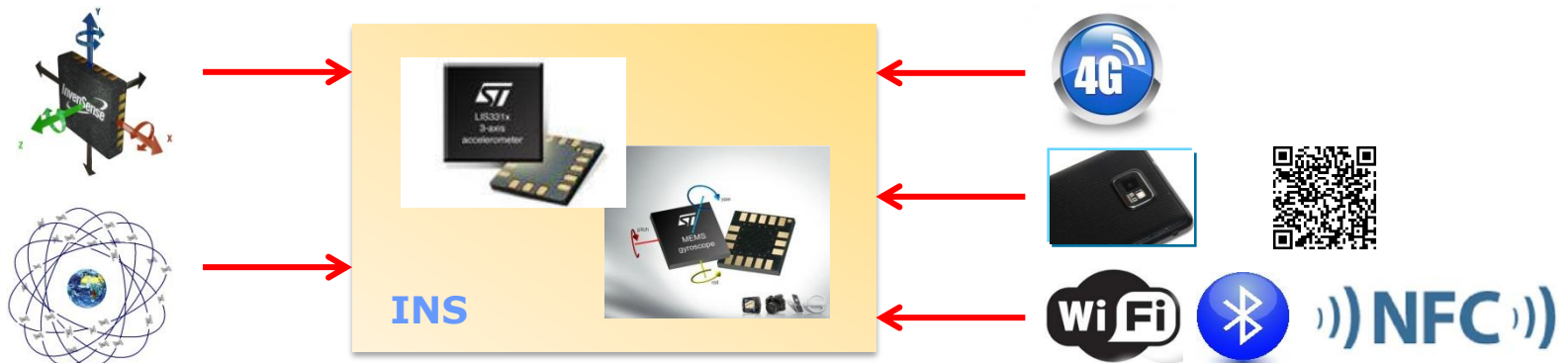
## LOCKOS main objectives:

- Develop an indoor geolocation solution at lower cost
- Use last generation smartphones / tablets as hardware platforms
- Minimize the support infrastructure of this solution
- Provide end users with a calculation engine



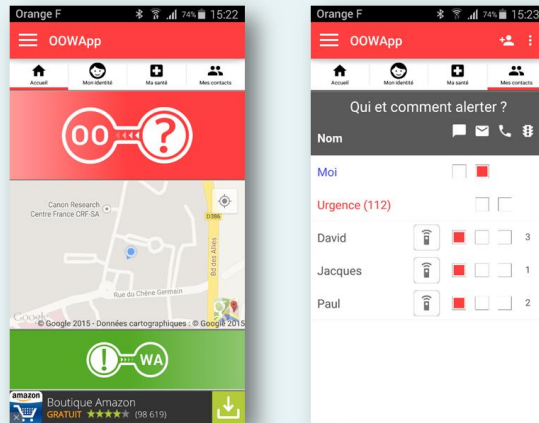
# Project advantages

- Autonomous solution based on inertia: **no need to deploy a significant hardware architecture**
- Solution **optimally using inertial sensors** (not reduced to the Dead Reckoning = pedometer) in the form of a strap-down navigation
- Solution **exploiting all available sensors** on a smartphone (magnetometer, GPS, Wi-Fi, 2G/3G/4G, photo and video) through an optimal data fusion
- Solution **performing all the calculations "on board"**, exploiting the computing resources of modern smartphones
- **Scalable** solution based on the available sensors (pressure sensor, NFC ...)



## Civil application (malls, public building, public transport, industry, ...)

Example: Alert message dissemination in case of aggression in the metro

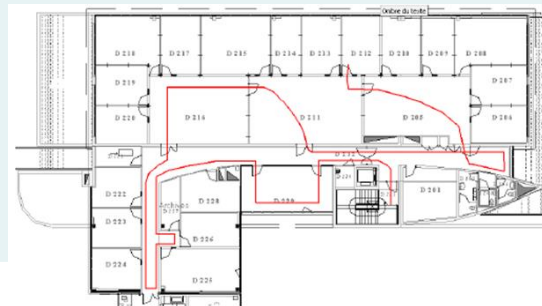


Example: Navigation to an underground car parking



## Security application (public security, ...)

Example: Guidance of firemen in buildings



# Looking for Partners

- To build up a map based on 2G/3G/4G, Wi-Fi and NFC collected data. LAC-CID and signal power transmitted from user community/antenna position will be provided.  
**Deliverable intended by the partner:** a tool to generate the map (precision scale of 1 meter)
- To follow-up the aging of the map and then continuously update it (through continuous data gathered and compiled)  
**Deliverable intended by the partner:** a tool to update the map
- To geolocate the user based on the map generated (Where am I on the map?) using fingerprinting with GSM/UMTS/LTE, Wi-Fi and NFC data  
**Deliverable intended:** a Fingerprinting localization solution
- To develop a mobile application (Android & iOS) that detects, warns and protects users from having unwanted or unsecured applications downloaded on their cell-phones. **The partner should also develop a technique in order to force downloading the application on a user's phone, discreetly, with or without the user's consent.**



# Contact Info

For more information and for interest to participate please contact:



David HERVE

[dherve@itlink.fr](mailto:dherve@itlink.fr) - 02 99 27 53 27

<http://www.itlink.fr>