



eltic-Plus⁺

Smart Connected World



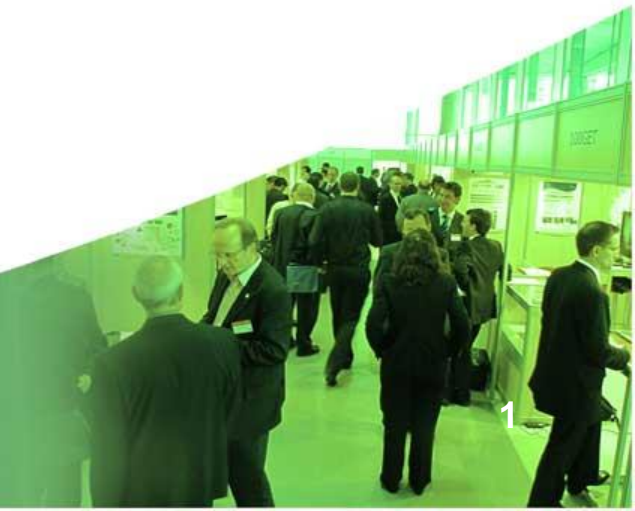
Celtic-Plus Event
28-29 April 2016, Stockholm

Wherever, Indoor/Outdoor Location Service

*<Kyle Hwang, Director, AscenKorea>
<kyhwang@ascen.co.kr>*

AscenKorea

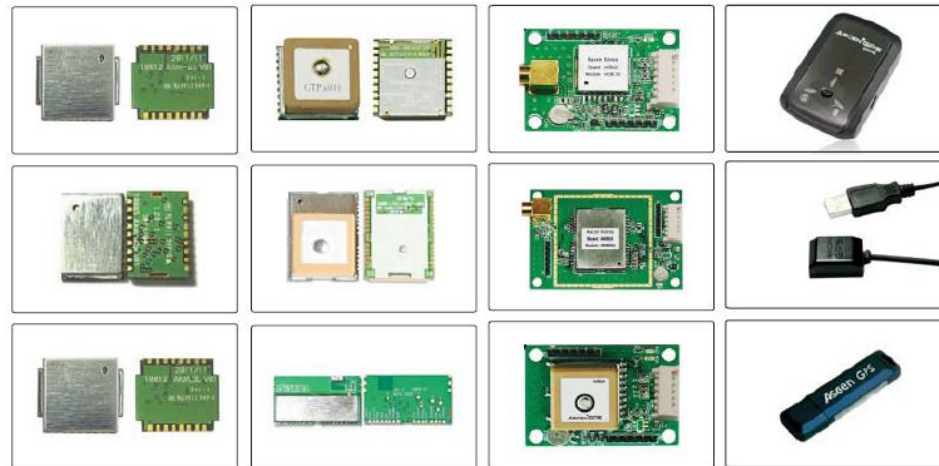
The Special Group in GNSS
www.AscenKorea.com



Teaser

Wherever, I can find you!!

*Indoor, Outdoor, Inter building
Precision, Accurate Positioning data*

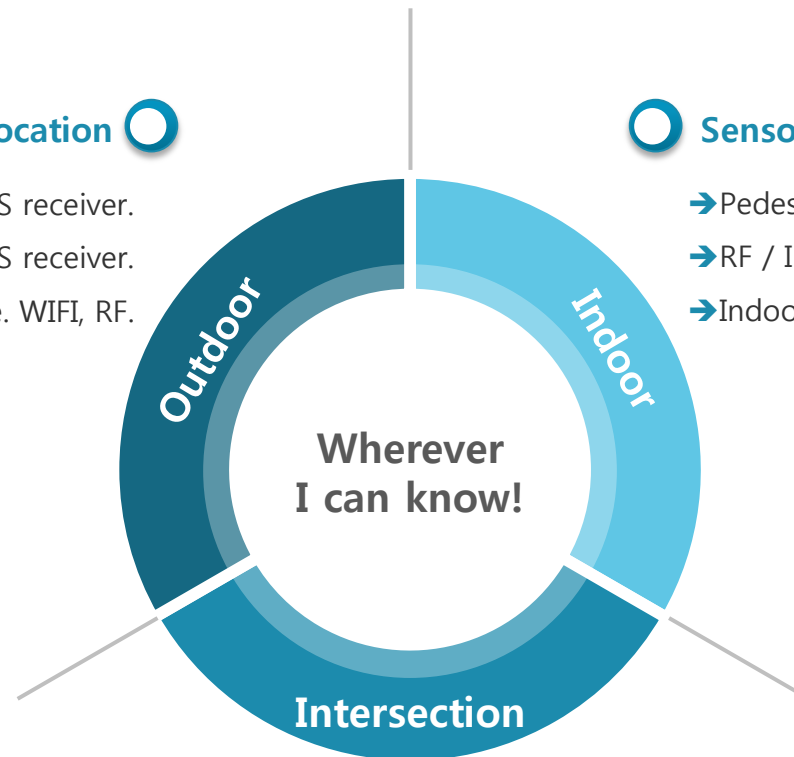


GNSS Based Location

- High Precision GNSS receiver.
- Combo GNSS receiver.
- GNSS data interface. WIFI, RF.

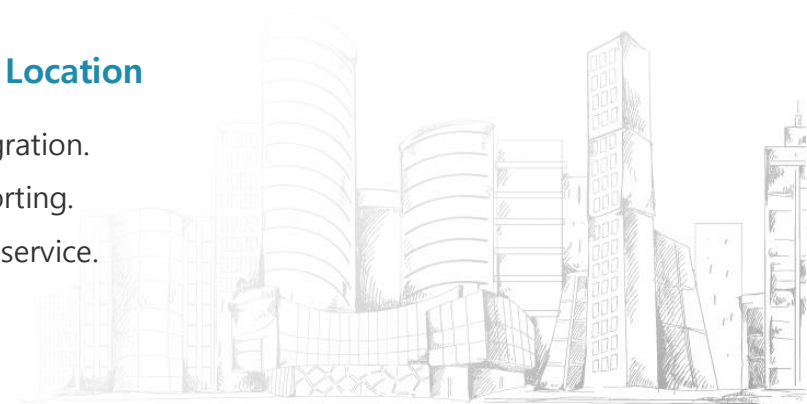
Sensor Based Location

- Pedestrian Dead Reckoning
- RF / IMU MEMS Module
- Indoor Navigation Module

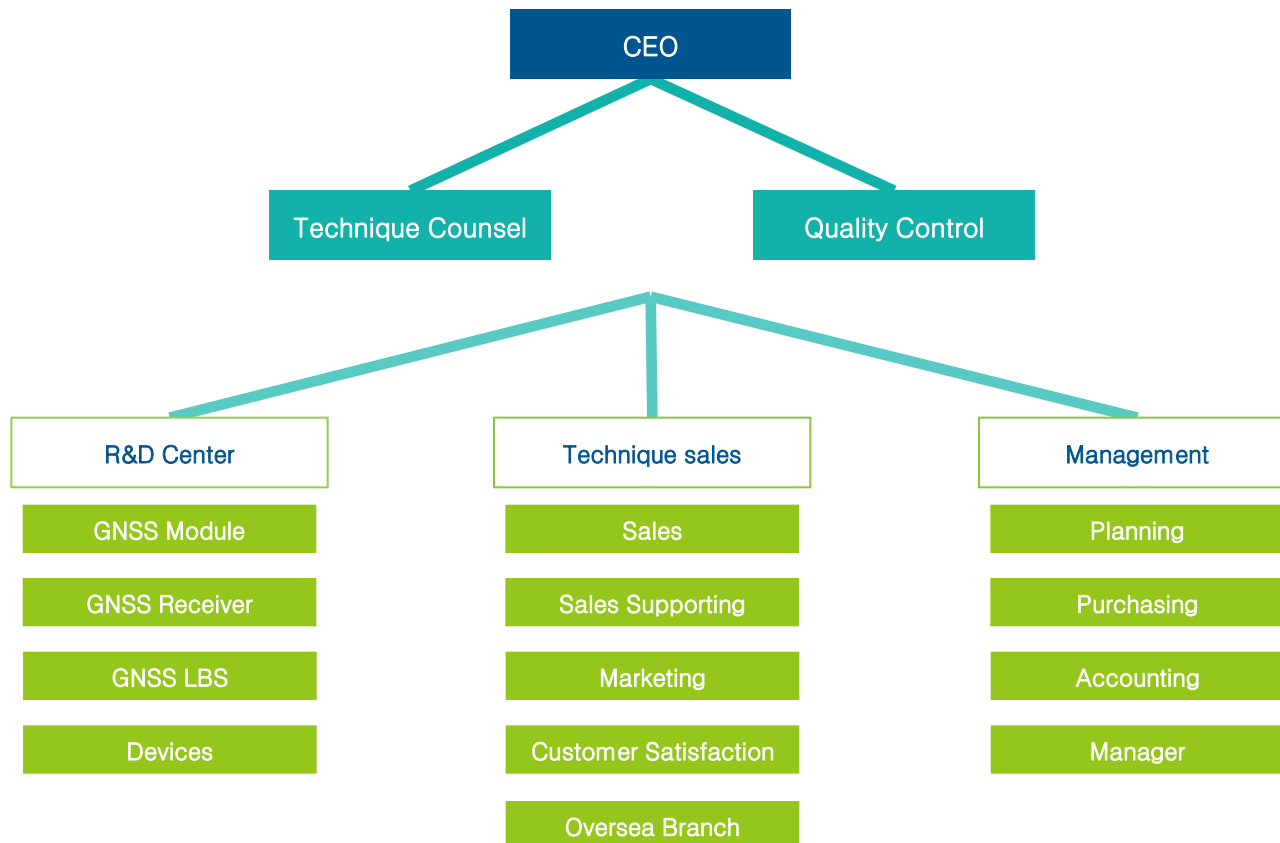


GNSS / Sensor Based Location

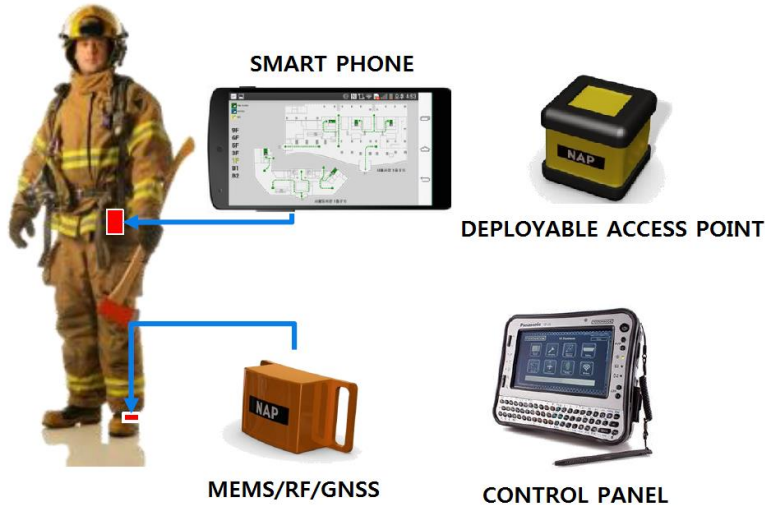
- UWB based system integration.
- GNSS, MEMS IMU supporting.
- Urban, Factory, Location service.



Organization Chart



Proposal Introduction



Indoor Navigation

- Accuracy 2.0m (100m way)
- Sensor Monitoring

*High Precision

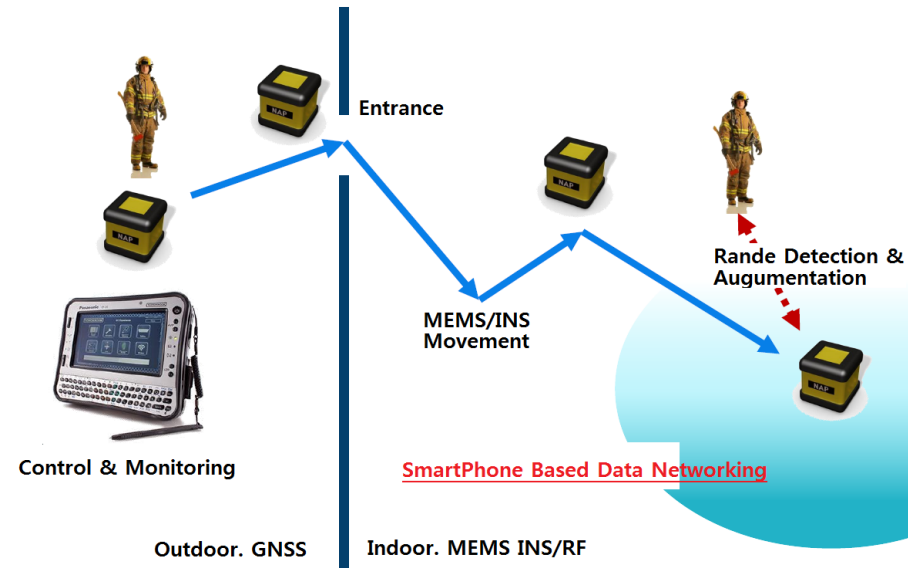
- 20cm

Outdoor Navigation

- Accuracy 1.5m
- GNSS Signal Receiving

*High Precision

- 2cm



System for

- Vehicle
- Human
- Robot
- Vessel
- Submarine
- Smart Factory

Technology of

- RF, Digital, GNSS
- Sensor, MEMS
- Indoor algorithm
- Outdoor algorithm
- RF Jamming Detection
- Handheld device



Contact Info

For more information and for interest to participate please contact:



Kyle Hwang
Kyhwan@ascen.co.kr
82-10-2298-6628
Post No 08588
rm710, 53 Gasandigital2ro, Gasandong
Gumcheongu, Seoul Korea
www.AscenKorea.com