



Information Technologies
Health

Celtic-Plus Event
19st May 2017, Barcelona

Smart At Home Care System for the Elderly People

Hamit YAŞASIN, TURKEY
hamit@tiga.com.tr

ELDERLY STATISTICS

WORLD STATS

- ▶ 65+ people %5 in 1950
- ▶ Increase to %12 in 2015
- ▶ Foreseen to %21 in 2050

- ▶ 227 bn\$ in 2015
- ▶ 10% annual increase
- ▶ 3k\$ to 6k\$ monthly
homecare service per
elderly

Aging in Place

- ▶ 87% of elderly prefer to stay home
- ▶ 75% of adults are concerned about
their parents

Technology for Elderly Care

- ▶ 2 Bn\$ annual size
- ▶ Foreseen to increase 20 Bn\$ until
2020
- ▶ **New Technologies are needed!**

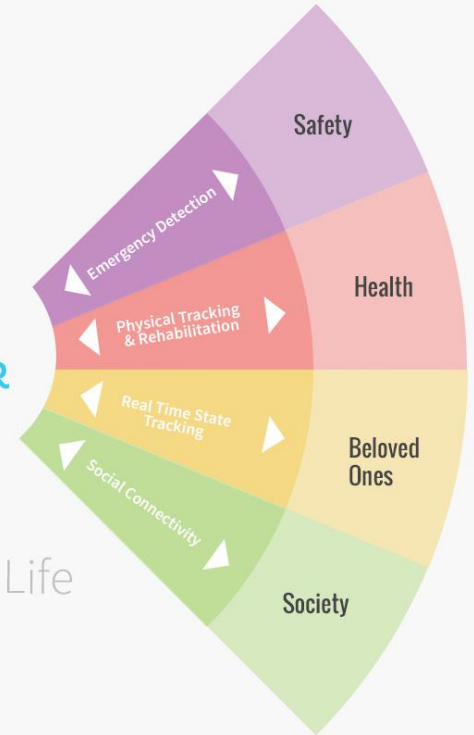


Aging in Place

- ▶ 87% of elderly prefer to stay home
- ▶ 75% of adults are concerned about their parents
- ▶ **Therefore, most needed technologies would be homecare technologies**



Closer to Life




HIGHLY DEMAND FOR HOMECARE TECHNOLOGIES

CLOSER: An innovative Ambient Assisted Living product, enabling at-home care services at affordable costs for senior people.

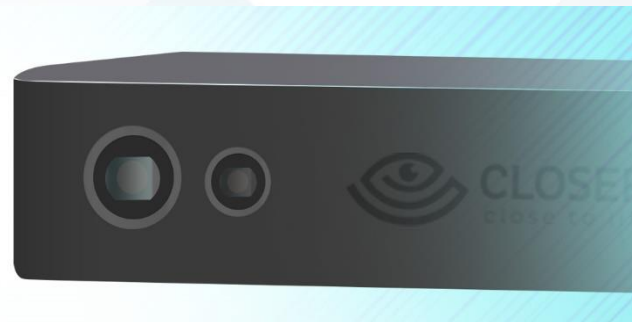
- ▶ No disturbing wearable sensors
- ▶ RGB and Depth sensors Collecting Information
- ▶ Smart algorithms tracking elderly

TIGA INFORMATIN TECHNOLOGIES

- Founded in 2007
- Focusing in Healthcare IT
- R,D&I Projects for developing new products
- 50+ people
-  **CMMI DEV / 3**



CLOSER
close to life



Stay Home Safely

- ▶ Heart Rate
- ▶ S.O.S. Gesture
- ▶ Fall Detection
- ▶ Anomaly Detection

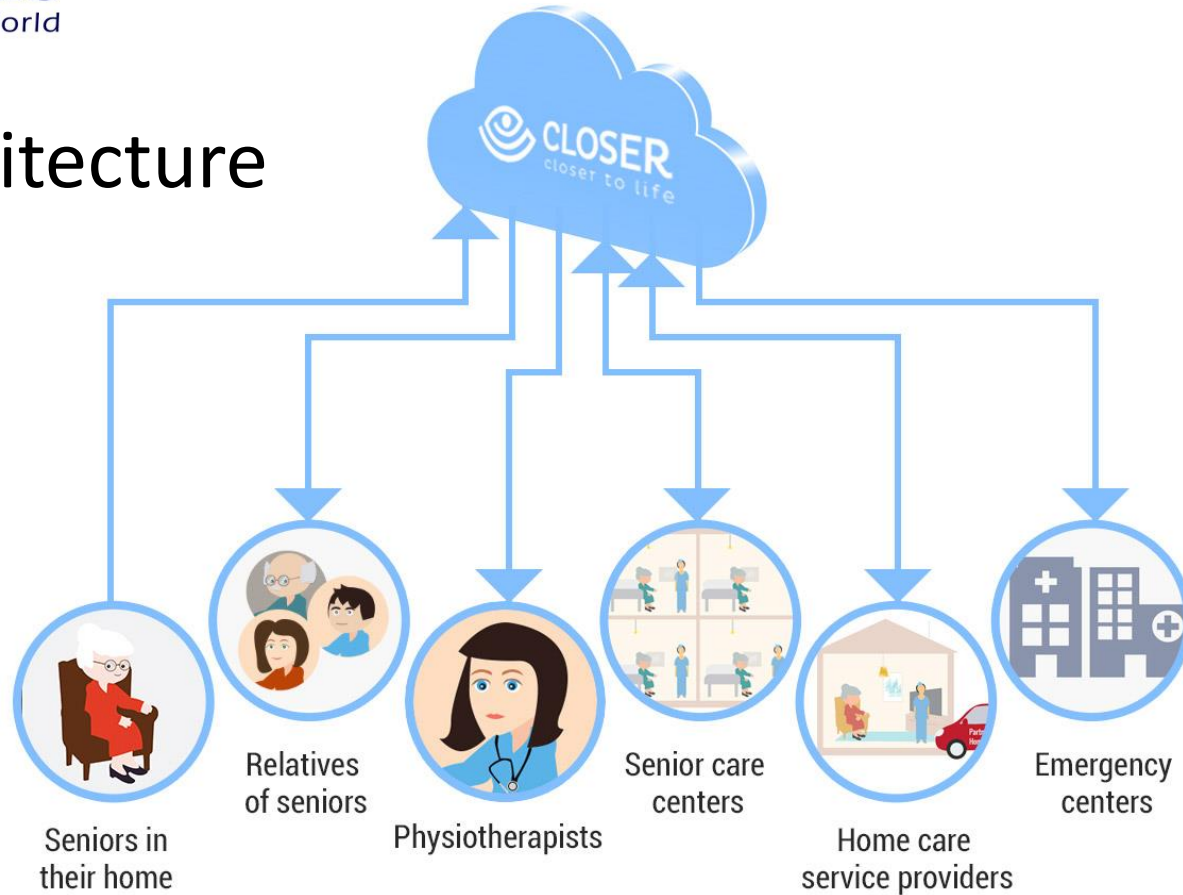
Physical Wellbeing

- ▶ Daily Exercise
- ▶ Motion Awareness
- ▶ Physical State Tracking
- ▶ Data Analysis

Social Wellbeing (next)

- ▶ Social Events
- ▶ Voice / Video Calls & Messages
- ▶ Psychological Support
- ▶ Group Exercises

Main Architecture



Partners

Existing Collaborations

- ▶ Hacettepe University as Healthcare Consultant (TURKEY)

Seeking Partners for Eureka

- ▶ **Telecommunication Companies** for connection services
- ▶ Experts on **Video streaming technologies** (possibly Universities & Research Institutes)
- ▶ **Marketing Experts** to exploit the new product in worldwide market
- ▶ **Homecare** service companies and/or **Rehabilitation Centers** for Piloting
- ▶ **Data Mining** expert companies to evaluate collected data (big data)

Contact Info

For more information and for interest to participate please contact:



Hamit YAŞASIN

hamit@tiga.com.tr

office:+90 312 473 82 87, Mob:+90 505 405 69 98

ANKARA / TURKEY

www.tiga.com.tr www.closertolife.net

The logo for 'tiga' is displayed in a white, lowercase, sans-serif font. The letter 'i' is unique, featuring a small red square above its dot. The background consists of a dark blue field with various overlapping, semi-transparent geometric shapes in shades of blue and cyan, creating a modern, abstract pattern.

tiga

Thank You...