



# CELTIC-EUROGIA Proposers Day



29<sup>th</sup> January 2020, at Nokia Premises in Madrid

Pitch of the Project Proposal

## Smart Points



Fatmagül İrfanoğlu, Project Specialist  
[fatmagul.irfanoglu@netcad.com.tr](mailto:fatmagul.irfanoglu@netcad.com.tr)



# Teaser

*Netcad's New Initiative, Netcad Innovation Lab, aims to humanize the technology.*

*We believe that AI will define and change the world we live in.*

- *Netcad Digital Universe (NDU) is an AI platform;*
- *Entegred with sensors to provide Smart City Solutions*
- *Artificial intelligent, machine learning and image processing driven algorithms*
- *Able to control, command and analysis*
- *Interpret the gathered data*

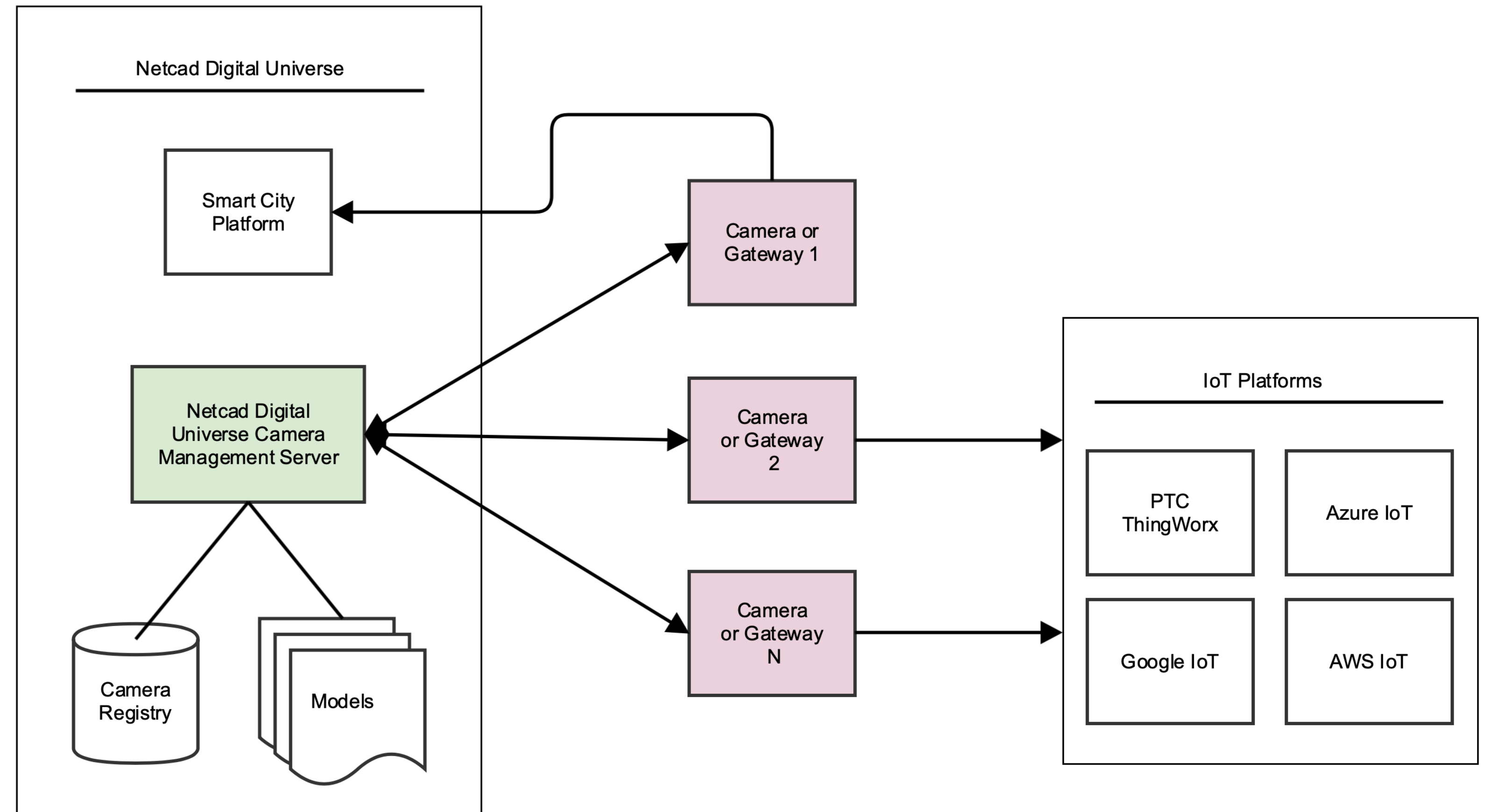




# Teaser

*We want to sense the city same way a human does – seeing instead of measuring*

- *A trained set to detect any entity or behaviour*
- *10+ ready to use models*
- *3rd party model building and distribution*



# Organisation Profile

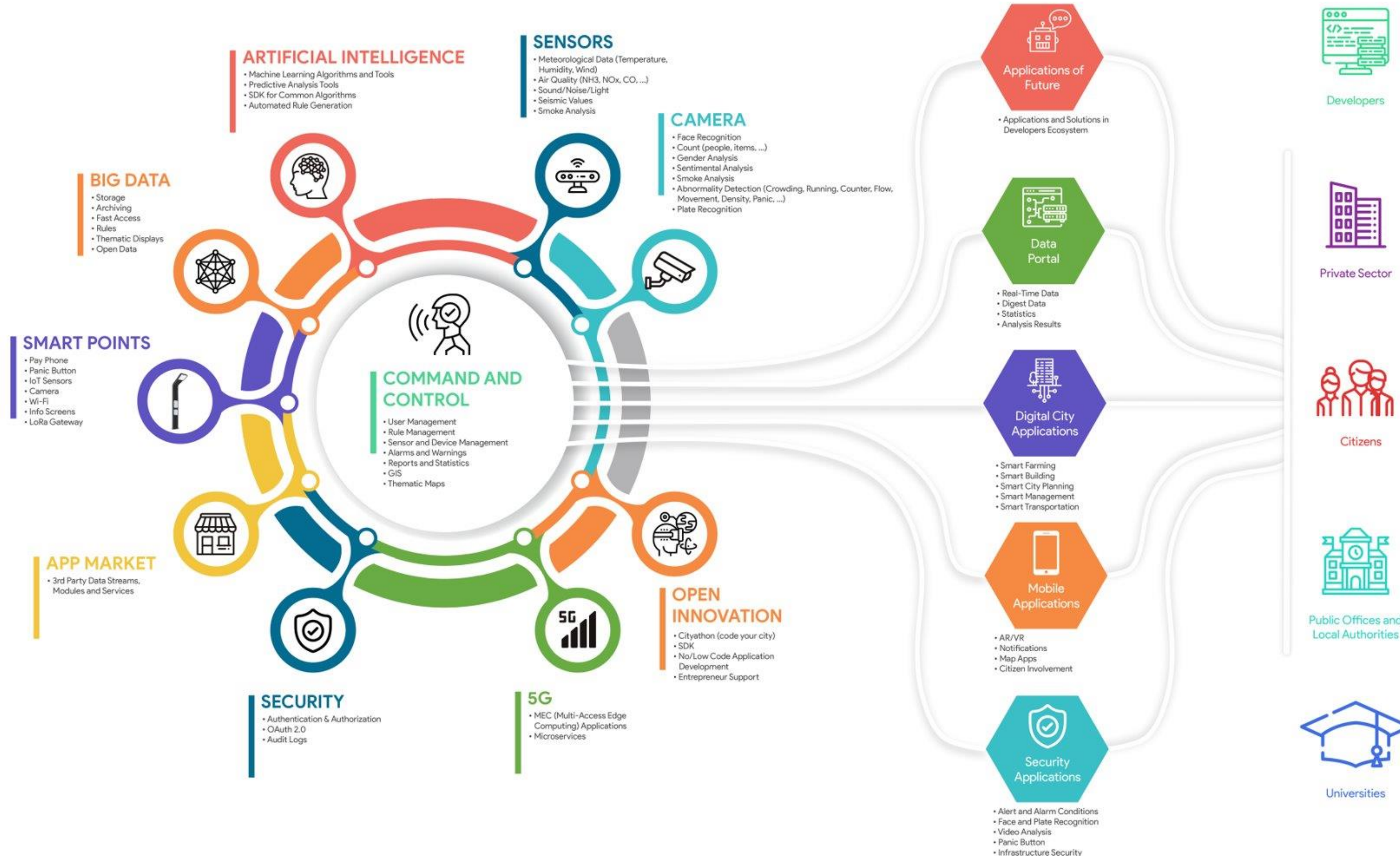


*Netcad is a software company that produces solutions for Mapping, Road/Channel/Dam Design, Agriculture, Forest, Geology, Mining, Environment, Urban Design and Infrastructure areas since 1989.*

- Local market leader in mapping solutions*
- 45,000 Licence*
- 100,000 user*
- 168 employee / 127 R&D*
- 4 Continents in 20 Country*



# Proposal Introduction





# Proposal Introduction



## *Vertical Solutions*

### *Focus -1*

*An AI based Smart Transportation solution to monitor public transportation drivers for smoking, cell phone usage, emotional changes running on the edge.*

### *Focus -2*

*An AI based edge-running Smart City solution to monitor playgrounds to collect data and analyze the utilization of toys and benches, warn for open electric boxes and entrance to prohibited zones (e.g. pools, mech rooms)*

### *Focus -3*

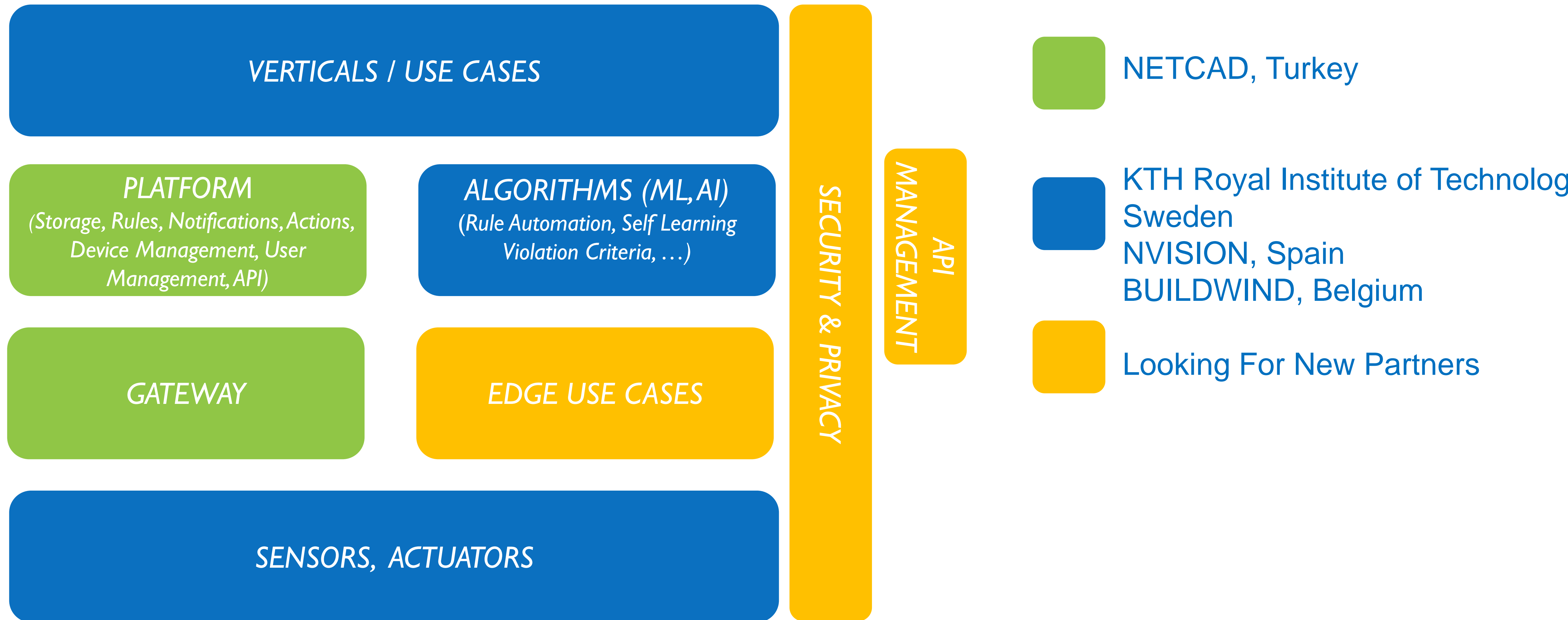
*A Smart City Platform with IoT support*

# Proposal Introduction



- *NDU as a middleware platform*
  - *Deal with the pace of Technology*
- *Requires orchestration of multiple services*
- *10+ ready to use model*
  - *Increase the quality of life for customers*
- *Crowdsourcing power*
  - *We are generating a huge and unique set for training machine learning models,*
  - *Which we provide to third parties for their own training purposes*

# Partners





# Join the follow-up Telco

## 5 February 14-14:30 CET

**Meeting number** :141 589 178

**Meeting password:** qdQXprA3N33

**Link to join:**

<https://eurescom-meetings.webex.com/eurescom-meetings/j.php?MTID=mdacd8706c9235834f0ea48799d4f3d8a>

Join by phone

**+49-6925511-4400** Germany toll

Global call-in numbers

[Can't join the meeting?](#)



# Contact Info



**For more information and for interest to participate please contact:**

Fatmagül İrfanoğlu, Project Specialist,  
fatmagul.irfanoglu@netcad.com.tr

+90 554 9296786

Headquarters

Bilkent Cyber Plaza, B Blok

No:409 Cyberpark 06800 Çankaya/Ankara

<https://www.netcad.com>



**Presentation available via:**