

# ITRI

Industrial Technology  
Research Institute

## the Present and the Future of TW-EU Cooperation

Frank Shiu / Industry, Science and Technology  
International Strategy Center, ITRI

2022/12/09

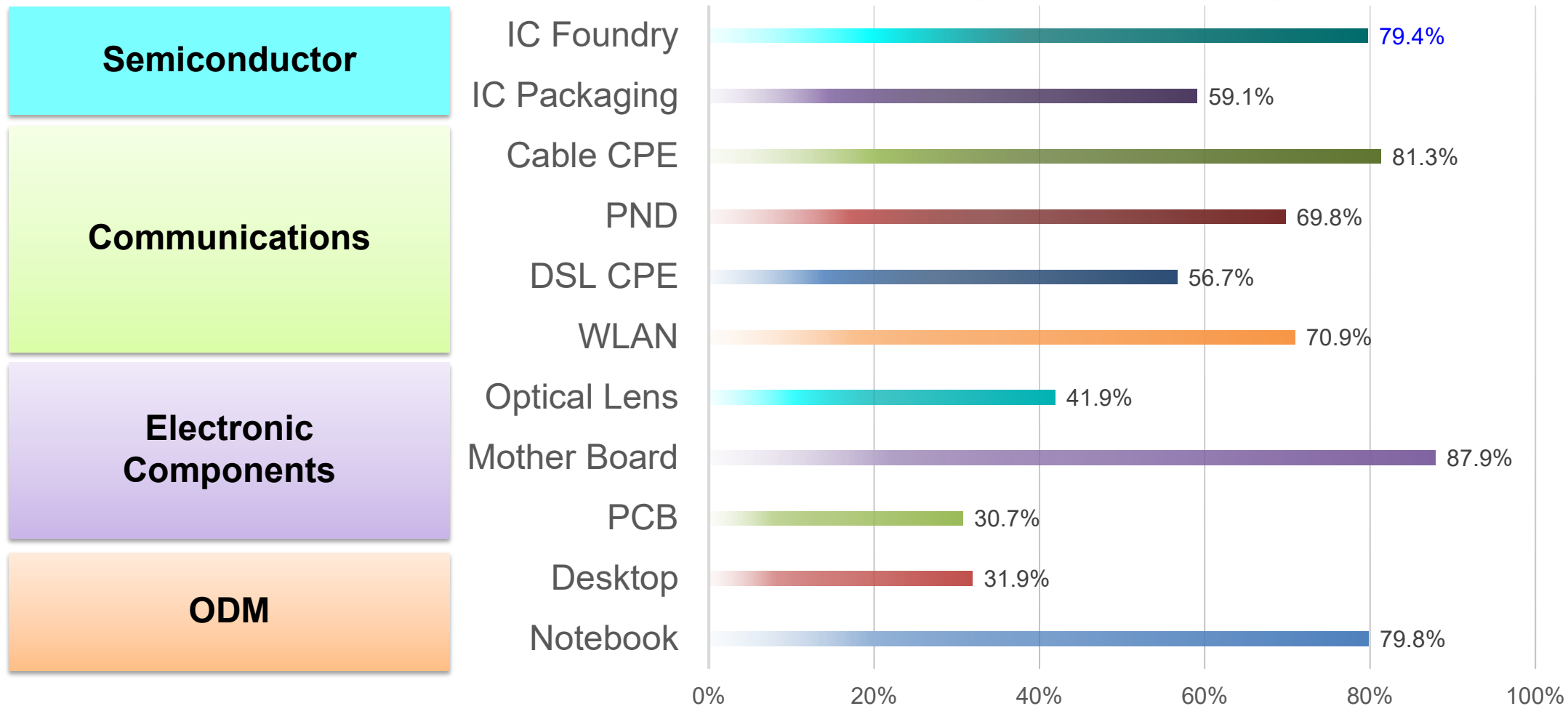


# Outline

- Taiwan and ITRI
- Cooperation Results Overview
- TW-EU Cooperation Mechanisms

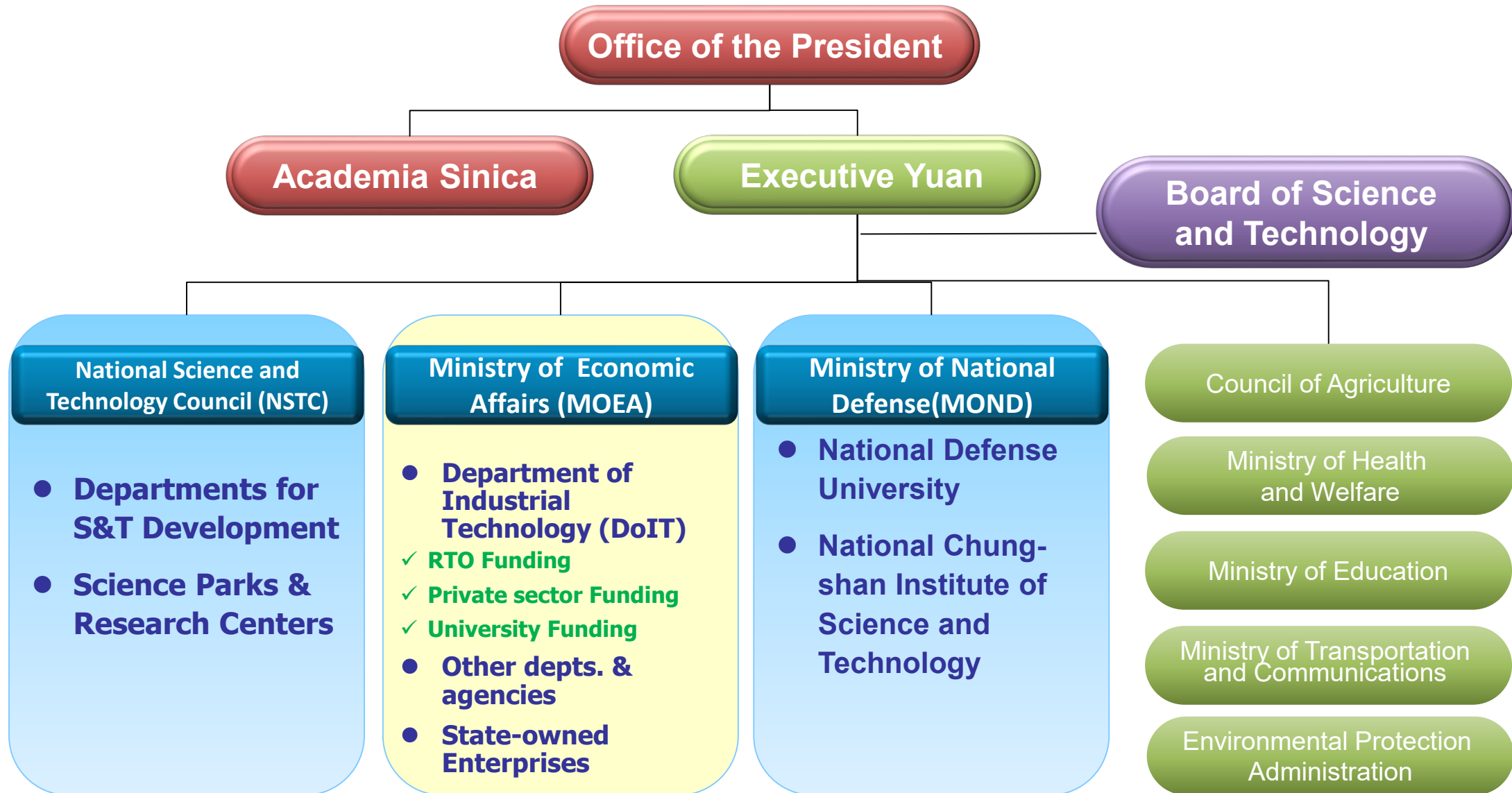
# Product/Technology Leadership in Taiwan Industries

**2021 Global Market Share of Key Sectors**  
(overseas production included)



ISTI Source: ITRI/ISTI Research (2022/02)

# Taiwan S&T Innovation System in Government



# Industrial Technology Research Institute, ITRI

Founded in 1973, Taiwan's Largest and One of the World's  
Leading High-Tech Applied Research Institute



**Total Staff: 6,044** (~2022/02)

Ph.D: 1,315  
Master: 3,699  
Bachelor: 1,030  
Alumni: 26,697



**Total Patents** (~2022/02)

**30,958**

**Startups &  
New Business Units** (~2021/Q4)

**153**



**Industry Services** (2021)

Provided Services: **18,392**  
Transferred Technologies: **669**

**Incubatees** (~2021/Q4)

**181**

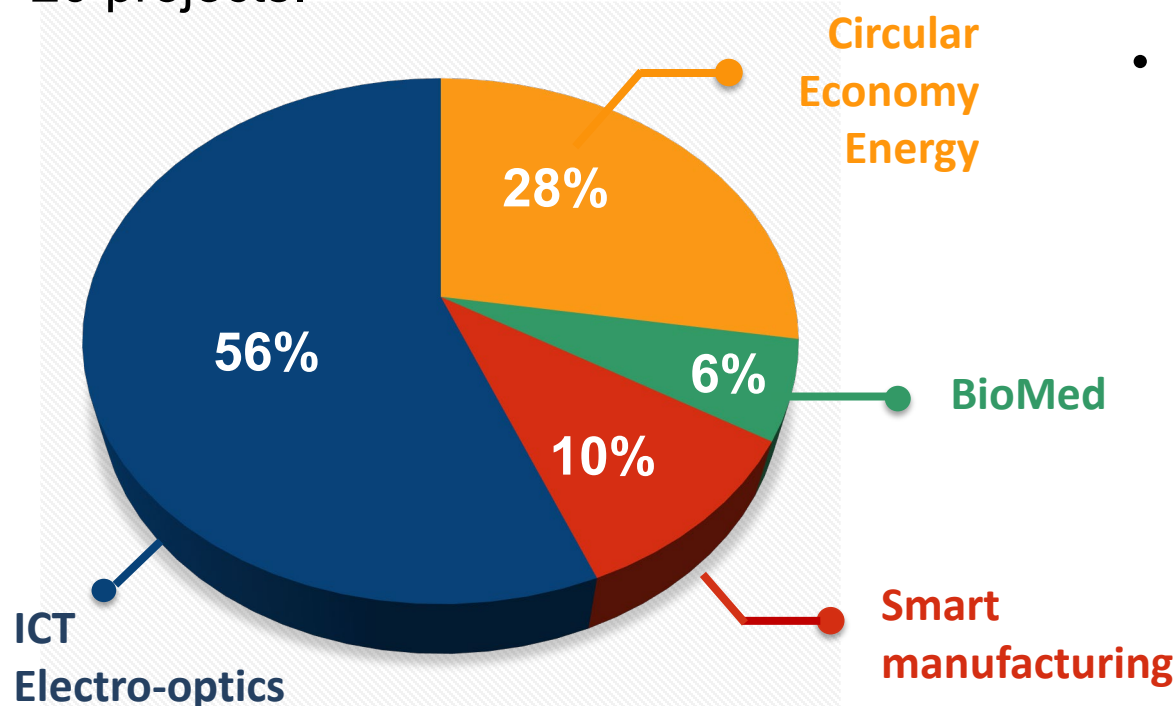
**Total Revenue : €781 Millions (2021)**



# ITRI's Role in TW-EU Cooperation

## ITRI's Participation

Since 2008, Taiwanese organizations have participated in 58 EU projects, and among them, ITRI has played a role in 20 projects.



ISTI Source: ITRI/ISTI Research

## What ITRI Dose

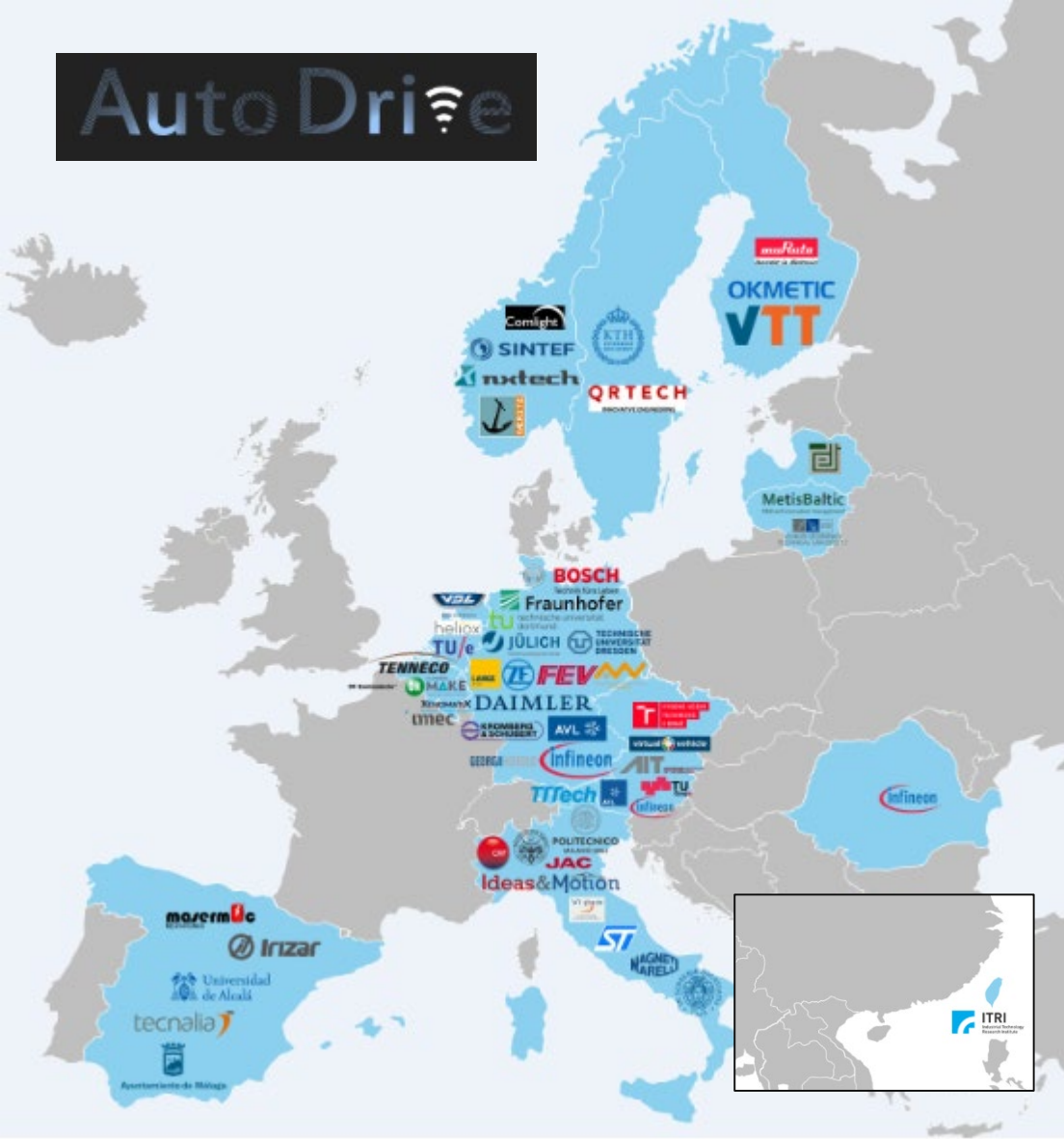
- Bringing associations and private sectors from Taiwan and the EU together.
- Providing a cooperation platform to facilitate bilateral/multilateral collaborations with the EU.
- Forming long-term partnerships with leading EU research institutes to identify demands and tackle global challenges.



# Cooperation results (ICL, ITRI)

- The Information and Communications Research Laboratories (ICL, ITRI) with the core technology **RAIBAI**, uses AI to control electric discharge load of battery modules and integrate the storage system of new and old modules to extend battery life.
- AutoDrive is coordinated by INFINEON (Germany)

3Ccar	AutoDrive	AI4DI
2015-2018	2017-2020	2019-2022
47 partners including the ICL (ITRI)	60 partners including the ICL (ITRI)	41 partners including the ICL (ITRI)



# PULSE (ASUS Cloud)

The EU is focused on environmental monitoring including the co-relation between diseases and the environment (in this project, [asthma](#) and [diabetes](#))

**PULSE**  
Participatory Urban Living for Sustainable Environments



Harvesting Big Data from multiple sources



Tracking and modeling air quality



Improving predictive analytics for diseases



Modelling behavioral, environmental and clinical risk factors



Visualizing geo-located population-based data



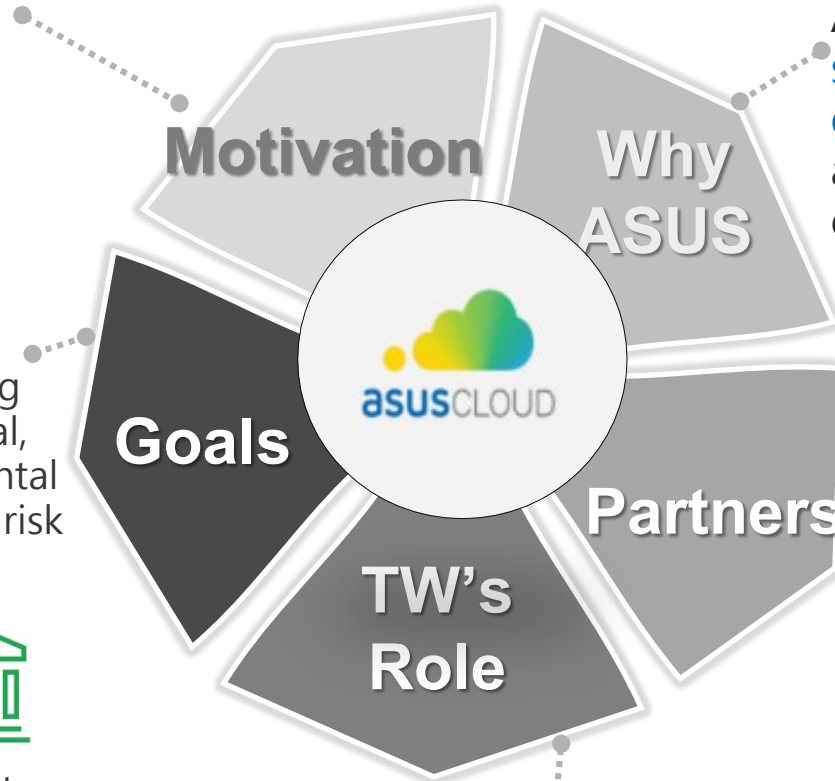
Promoting healthy lifestyles and wellbeing



Building public health observatories



Promote Health in All Policies



ASUS Cloud specialising in [soft/hardware integration and data collection/ analysis](#) plays a vital role in this project collecting data from Taiwan.

12 partners from 8 countries including ASUS Cloud.

One of the 6 testbeds is in Taiwan. Data from city governments, health systems, and citizens have been collected to form an air quality-respiratory illnesses model



# EUREKA Taiwan Call 2021

## The United Kingdom

PRIME-3D

MTC+ Q5D+ADVANCED WIRELESS &  
ANTENNA+ITRI  
Smart Manufacturing

Digital ARC

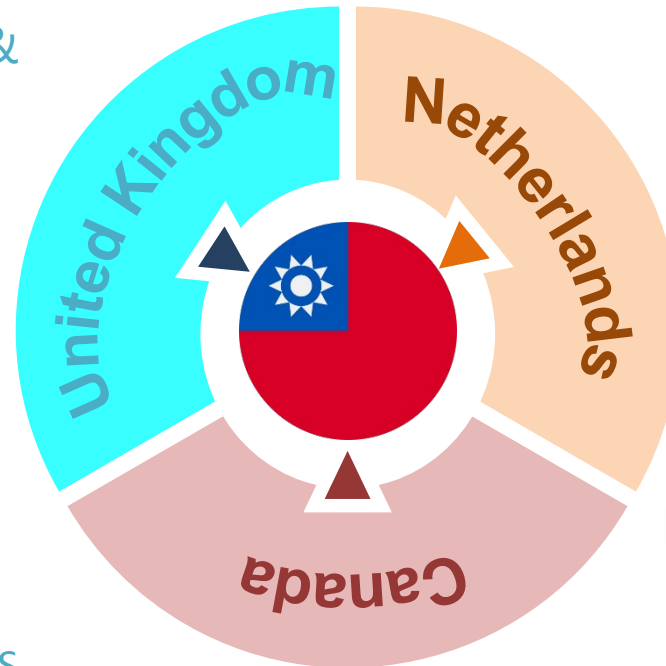
MTK Research UK+ Maxeda  
Semiconductor

intelligent CHO  
cell bioproduction

GENENET+CPI+Instant NanoBiosensors  
Smart Manufacturing



**Total Budget € 10.65M**  
2022-2024



Canada

SEi ULH Turbine

Swiderski+Taiwan DIGI  
Smart Manufacturing

## The Netherlands

AIMS

Altum RF+ TMYTEK +ITRI  
Semiconductor

SUNSPOT

Somni+THU+ System Access  
photonics

One Planet

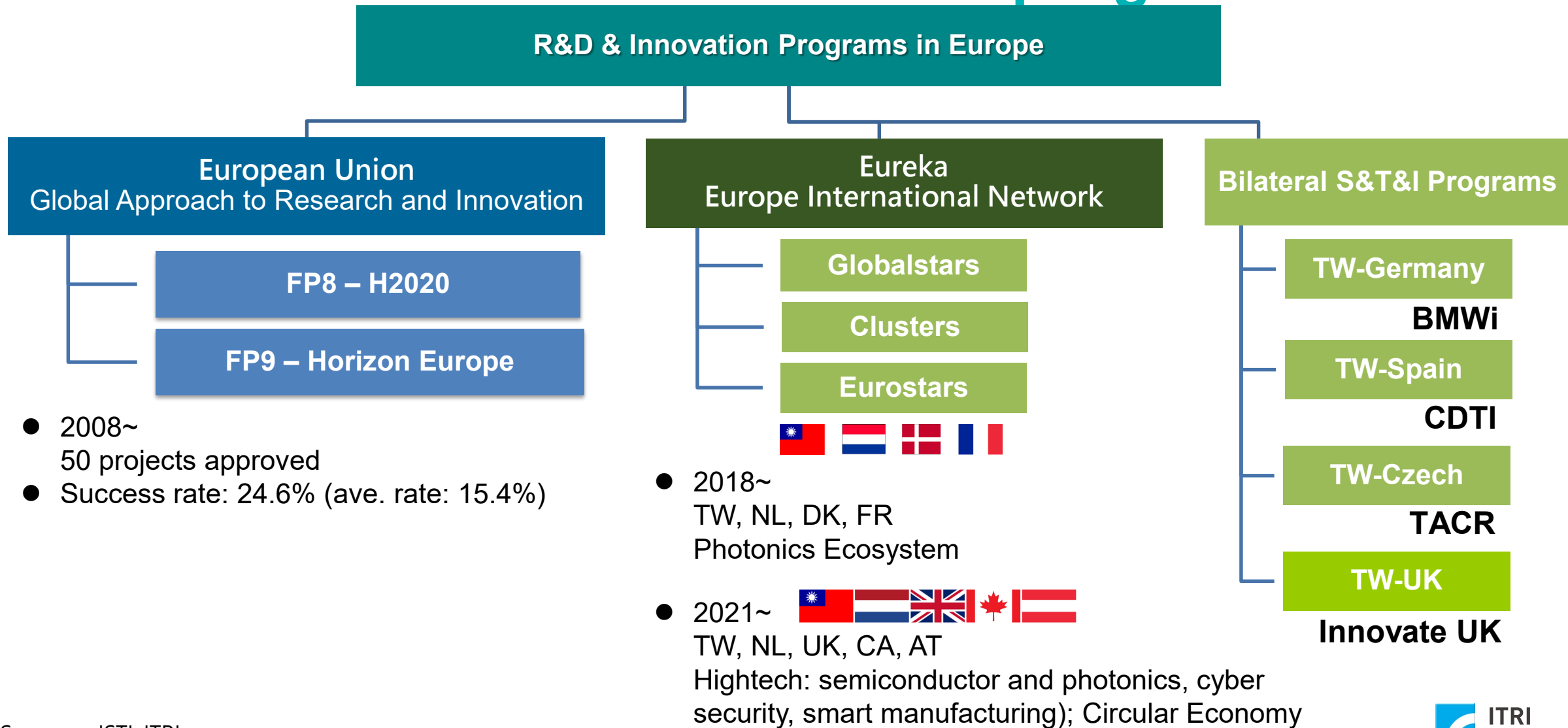
LifeSense Group+Megabona+ HWA LIN  
Circular Economy

GMB

Optics11+TNO+Somni  
+PhotonFirst+ HarveTech +NCREE  
photonics

# TW-EU S&T&I Collaborations

## bilateral and multilateral programs



# A+ R&D Programs in Taiwan

Supported by  
Department of Industrial  
Technology (DoIT)

## A+ Industrial Innovation R&D Programs



Industrial Technology  
Foresight Research Program

Global R&D Innovation  
Partner Program

Industrial Technology  
Innovation Center Program

Special Programs

Taiwanese companies who have become  
EU project participants are eligible for  
applying for the subsidy provided by  
DoIT, and the subsidy can be up to 50%  
of the project' s budget.



International Innovation and  
R&D Collaboration Program



## International Linkage

**Resilient for  
Co-Innovation**   **Sustainable for  
Co-Prosperity**



2021 IEKTopics



IEKNet

# THANK YOU

**Frank Shiu / Division Director**

[jwshiu@itri.org.tw](mailto:jwshiu@itri.org.tw)

**+886 3 591 5562**

Given the rapid pace of change in cutting-edge technology and industry development, the timeliness and comprehensiveness of the information included in this presentation cannot be guaranteed by ITRI. Users of this presentation shall bear full liability for any injury or loss that may be sustained as a result. The Copyright of this presentation belongs to ITRI and none of this presentation, either in part or in whole, in any form, may be reproduced, publicly transmitted, modified or distributed or used by other means without permission from ITRI.