

# CELTIC-NEXT

## Project Proposal Pitch

13<sup>th</sup> of March 2024

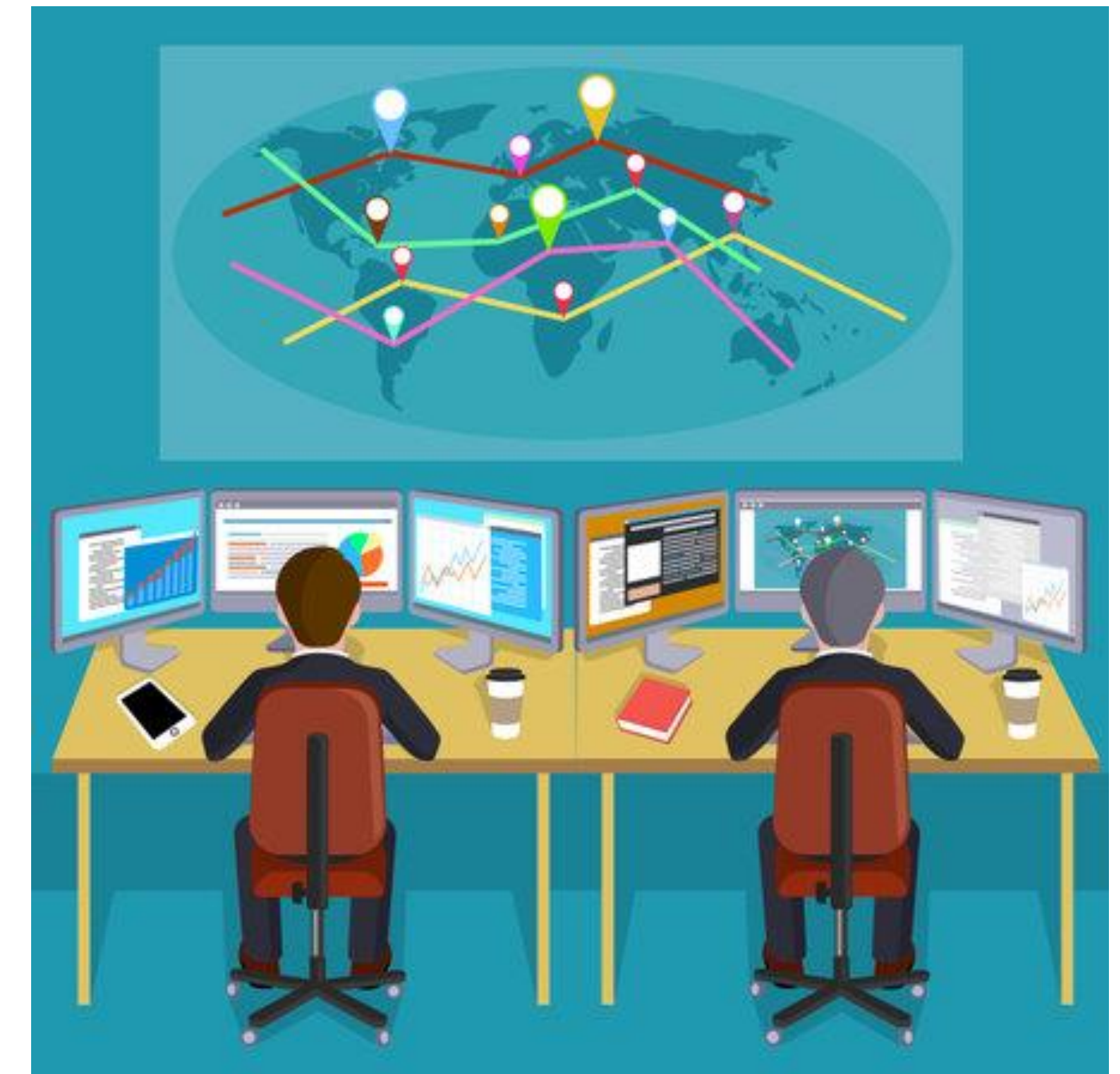
*AI to the rescue*

Ian Marsh Ph.D, Research Institutes of Sweden  
[ian.marsh@ri.se](mailto:ian.marsh@ri.se)



# Needs

- IT systems are becoming ever more complex.
- Fault, bugs, ticket, vulnerabilities remain.
- Our pitch is *to close the gap* between human-operator insights and system-logs.
- Makes root cause analysis easier, finding hard bugs and better future software practices.
- A partner in “AI to the rescue” can utilize (and learn) ML techniques + systems knowledge & lease with their partners using our software.





# RISE, Research Institute of Sweden (RISE) AB

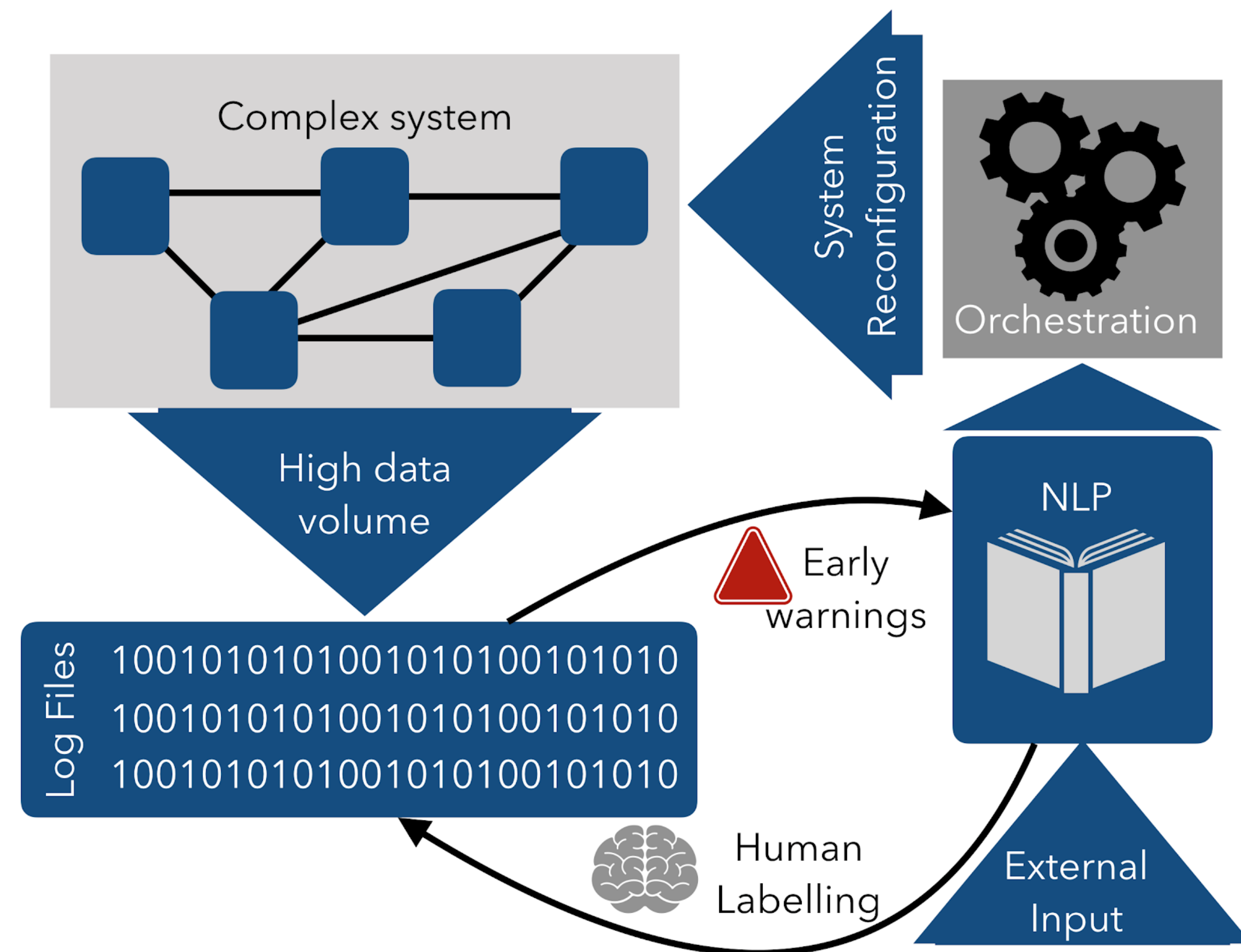
- RI.SE is Sweden's state-controlled research center, nationwide.
- About 3500 researchers (30% with Ph.Ds)
- About 360 M€ turnover
- Mission “RISE is Sweden's research institute and collaboration partner. Through international collaboration with industry, academia and the public sector, we ensure business competitiveness and contribute to a sustainable society”
- Open days, education, student sessions...





# Proposal Introduction

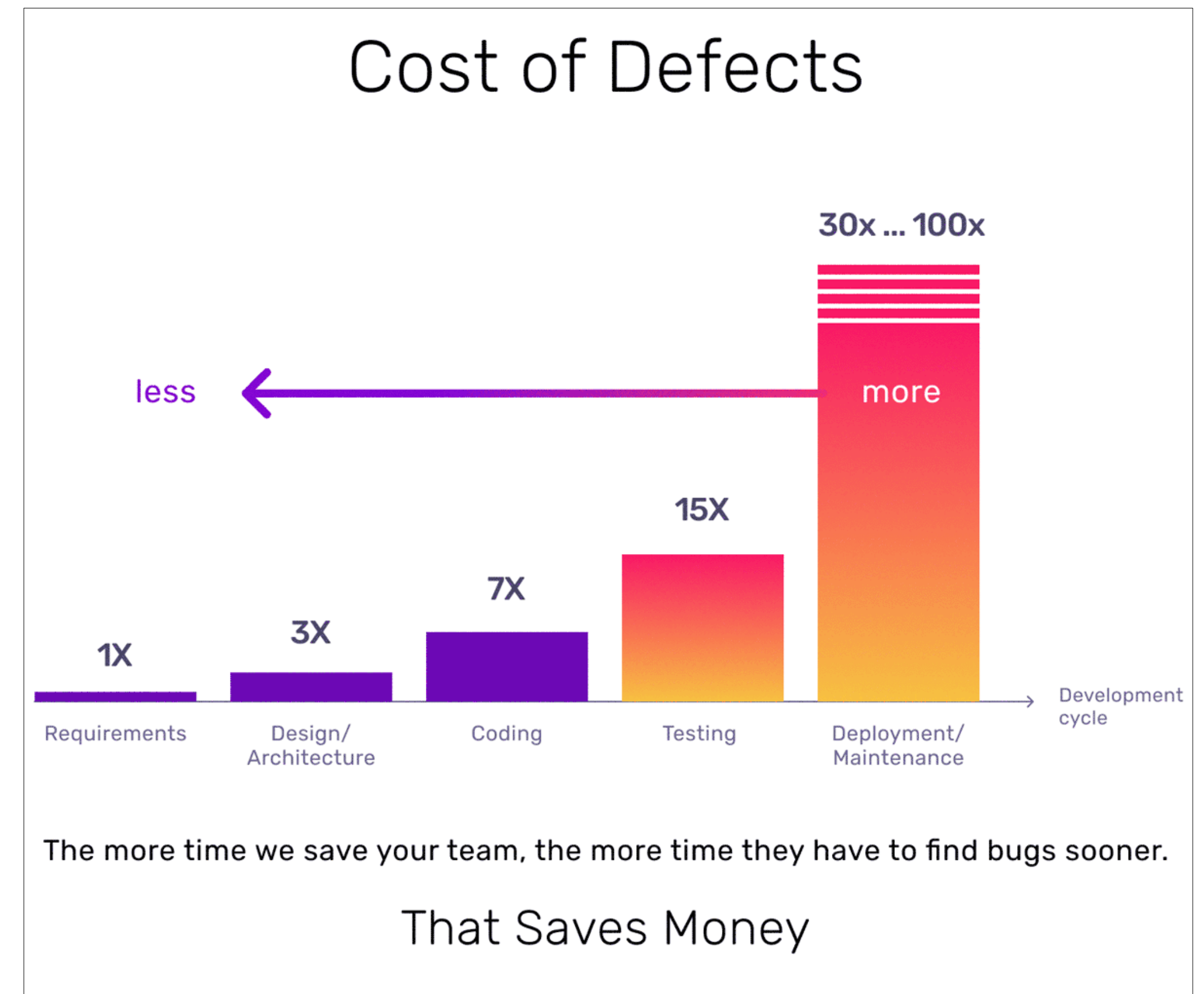
- Vision
  - Close gap between human knowledge and machine logs (AI + structured logs)
- Motivation
  - Human generated error ‘tickets’ circulate within organisations for days whilst system engineers try and find errors in systems.
- Content
  - Small data “port 883 is broken” Vs. GBs of print statements.



# A way forward... actually backward

Let's start from what we want:

Less bugs → traceable systems →  
match known failures with logs →  
structure logs → learn from data  
→ validate AI → match & find →  
[retrain, add more data, adjust  
search] → find sources → **find**  
**partners** 🥰



# Partners

- Needed:
  - Data providers, Systems providers, Network Operations Centers (NoCs), Cyber-security centers, Cyber Ranges (can provide too)
- Already in
  - Sweden (RISE, SMEs)
  - Finland (VTT, FGI / FMI, Kaitotek)
- In discussions
  - With large European telcos :-)



# Contact Info

**For more information and for interest to participate please contact:**

Ian Marsh  
ian.marsh@ri.se  
+46707721536  
Sweden

Presentation available via:





# Join Consortium Building Session

18<sup>th</sup> of March 13-13.30 CET

[join here](#)



***AI to the rescue***

